



National
Qualifications
2019

X833/76/11

**Geography
Physical and Human
Environments**

TUESDAY, 28 MAY
9:00 AM – 10:50 AM

Total marks — 100

SECTION 1 — PHYSICAL ENVIRONMENTS — 50 marks

Attempt ALL questions.

SECTION 2 — HUMAN ENVIRONMENTS — 50 marks

Attempt ALL questions.

You will receive credit for appropriately labelled sketch maps and diagrams.

Write your answers clearly in the answer booklet provided. In the answer booklet you must clearly identify the question number you are attempting.

Use **blue** or **black** ink.

Before leaving the examination room you must give your answer booklet to the Invigilator; if you do not, you may lose all the marks for this paper.



* X 8 3 3 7 6 1 1 *

SECTION 1 — PHYSICAL ENVIRONMENTS — 50 marks

Attempt ALL questions

Question 1

Diagram Q1 Corrie with tarn



Look at Diagram Q1.

Explain the formation of a corrie.

You may wish to use an annotated diagram or diagrams in your answer.

8

Question 2

Diagram Q2 Sand spit



Look at Diagram Q2.

Explain the formation of a sand spit.

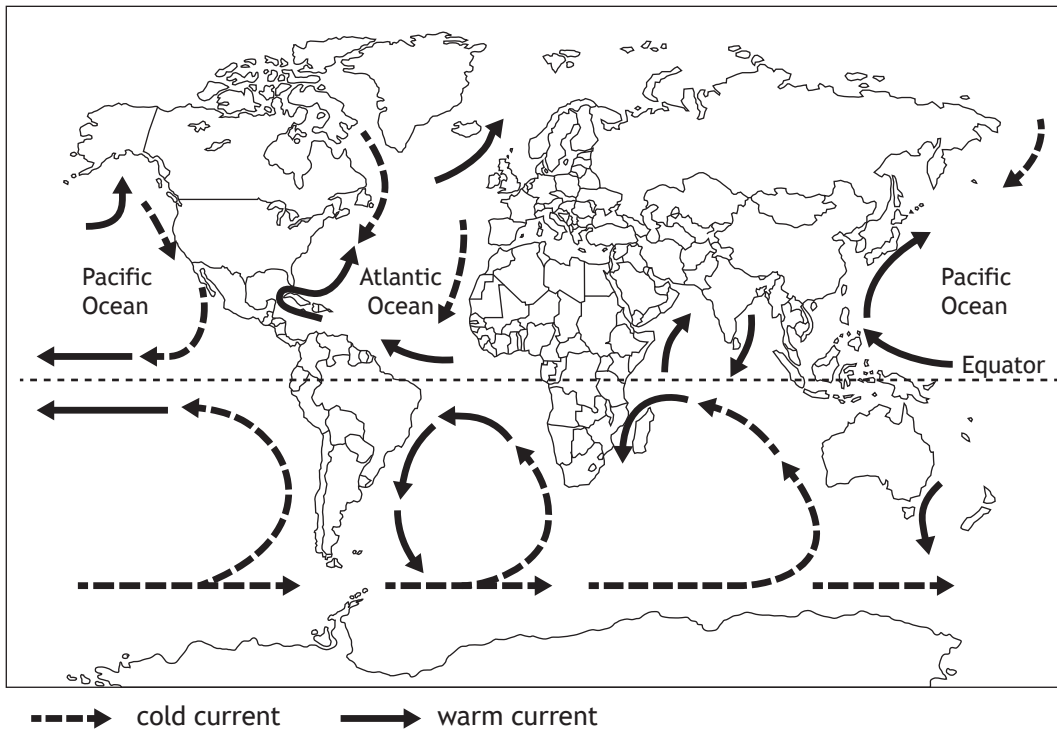
8

You may wish to use an annotated diagram or diagrams in your answer.

[Turn over

Question 3

Diagram Q3 Selected ocean currents

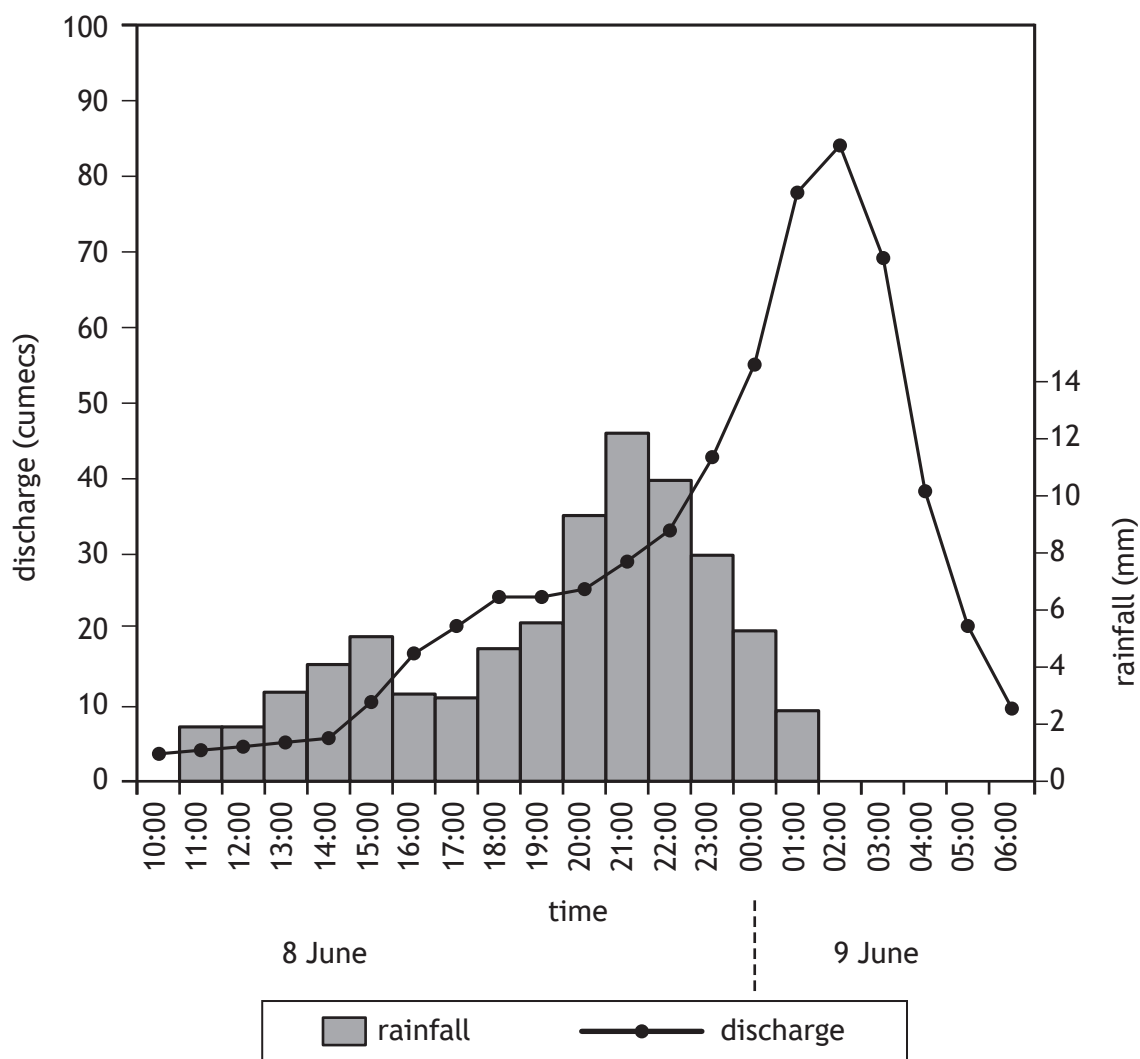


Study Diagram Q3.

- (a) Describe the pattern of ocean currents for either the Pacific Ocean or the Atlantic Ocean and
- (b) explain how ocean currents redistribute energy around the globe.

8

Question 4

Diagram Q4 Flood hydrograph for the River Leri, West Wales, 8th and 9th June 2012

Study Diagram Q4.

For the River Leri on 8th and 9th of June

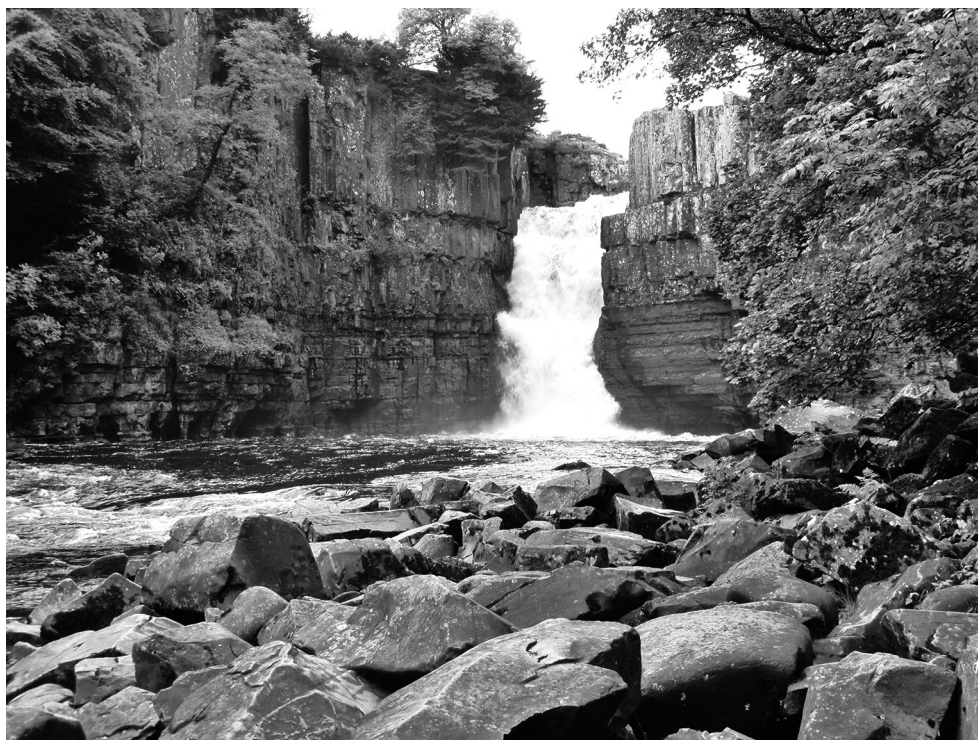
- describe** the changes in discharge level **and**
- suggest reasons** why these changes may have occurred.

10

[Turn over

Question 5

Diagram Q5 High Force waterfall in County Durham



Look at Diagram Q5.

Waterfalls are commonly found in the upper course of rivers.

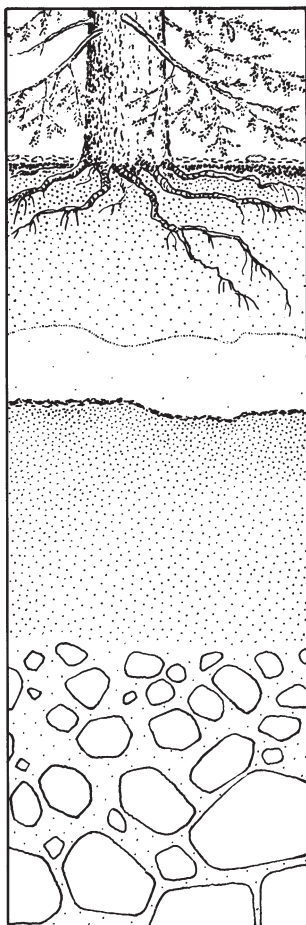
Explain the formation of a waterfall.

8

You may wish to use an annotated diagram or diagrams in your answer.

Question 6

Diagram Q6 Podzol soil profile



Look at Diagram Q6.

Explain the main conditions **and** processes involved in the formation of a podzol soil.

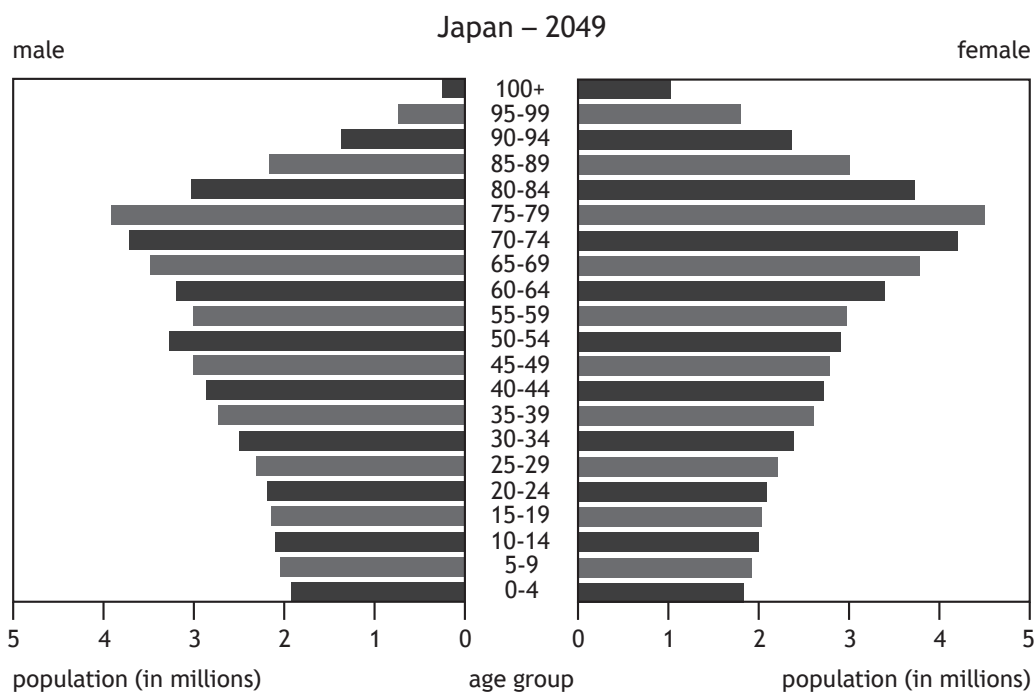
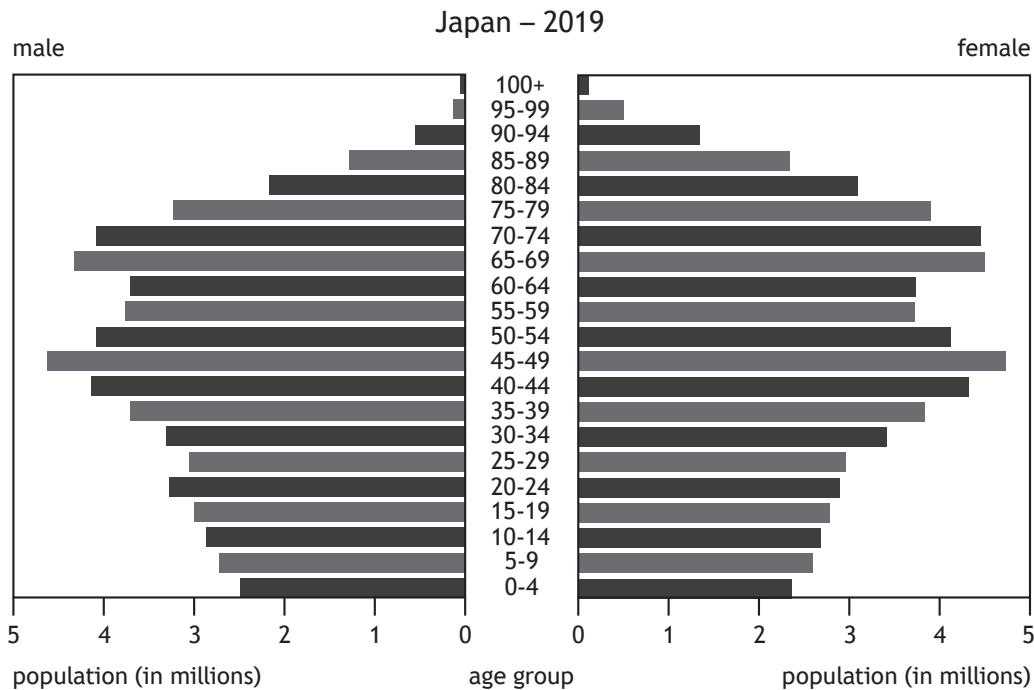
8

[Turn over

Attempt ALL questions

Question 7

Diagram Q7 Population pyramids for Japan 2019 and 2049 (projected)



Study Diagram Q7.

Japan's population structure is projected to change in the next 30 years.

Discuss the possible consequences of these changes.

Question 8

Discuss different methods used by countries to collect population data.

6

Question 9

Rural land degradation has many impacts on people and the environment.

Explain the impacts of rural land degradation on a semi-arid or rainforest area you have studied.

8

Question 10

Rural areas have a number of competing land uses which can create conflict.

Referring to a glaciated or coastal area you have studied, **discuss** the conflicts caused by the various land uses.

12

[Turn over

Question 11

'Newcastle City Council has announced plans to invest millions of pounds to improve housing in Newcastle by 2021'.

Explain the strategies used to manage housing problems in a developed world city you have studied.

8

Question 12

Diagram Q12 Traffic in Mumbai



Look at Diagram Q12.

For a developing world city you have studied, discuss the management strategies used to reduce traffic issues.

7

[END OF QUESTION PAPER]

[BLANK PAGE]

DO NOT WRITE ON THIS PAGE

[BLANK PAGE]

DO NOT WRITE ON THIS PAGE

Acknowledgement of copyright

Diagram Q1 Peter Turner Photography/Shutterstock.com

Diagram Q2 Image of 'Spurn Point' by Ben George is taken from www.bengeorgephotography.co.uk.
Reproduced by kind permission of Ben George Aerial Photography.

Diagram Q5 Carole MacDonald/Shutterstock.com

Diagram Q12 sladkozaponi/Shutterstock.com