



National
Qualifications
2021 ASSESSMENT RESOURCE

X833/76/12

**Geography
Global Issues and
Geographical Skills**

Duration — 50 minutes

Total marks — 40

SECTION 1 — GLOBAL ISSUES — 20 marks

Attempt **ONE** question.

SECTION 2 — APPLICATION OF GEOGRAPHICAL SKILLS — 20 marks

Attempt the question.

You will receive credit for appropriately labelled sketch maps and diagrams.

Write your answers clearly in the answer booklet provided. In the answer booklet you must clearly identify the question number you are attempting.

Use **blue** or **black** ink.

Before leaving the examination room you must give your answer booklet to the Invigilator; if you do not, you may lose all the marks for this paper.



* X 8 3 3 7 6 1 2 *



SECTION 1 — GLOBAL ISSUES — 20 marks

Attempt ONE question

Question 1 — River basin management

- (a) When selecting the site for a dam and its associated reservoir
- (i) **describe** the **physical** factors that need to be considered **and**
 - (ii) **explain** why they are important. **8**
- (b) **Discuss** the **negative** socio-economic and environmental consequences of a named river management project that you have studied. **12**

Question 2 — Development and health

Diagram Q2A Gross National Income (GNI) for selected countries

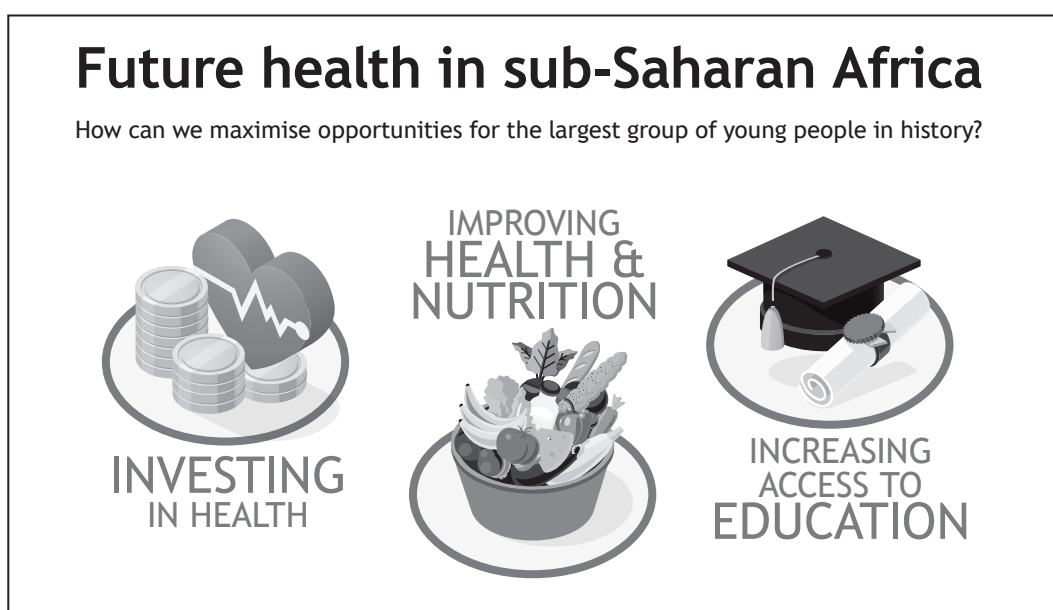
Country	GNI per capita US\$
Argentina	12,370
Cuba	7,230
Chad	670

Look at Diagram Q2A.

- (a) Explain why using only **one** development indicator, such as Gross National Income per capita, may fail to reflect accurately the true quality of life within a country.

6

Diagram Q2B Improving health in sub-Saharan Africa



Look at Diagram Q2B.

- (b) Referring to specific primary health care strategies you have studied
- (i) **describe** these strategies and
 - (ii) **comment** on the effectiveness of these strategies.

14

Question 3 — Global climate change

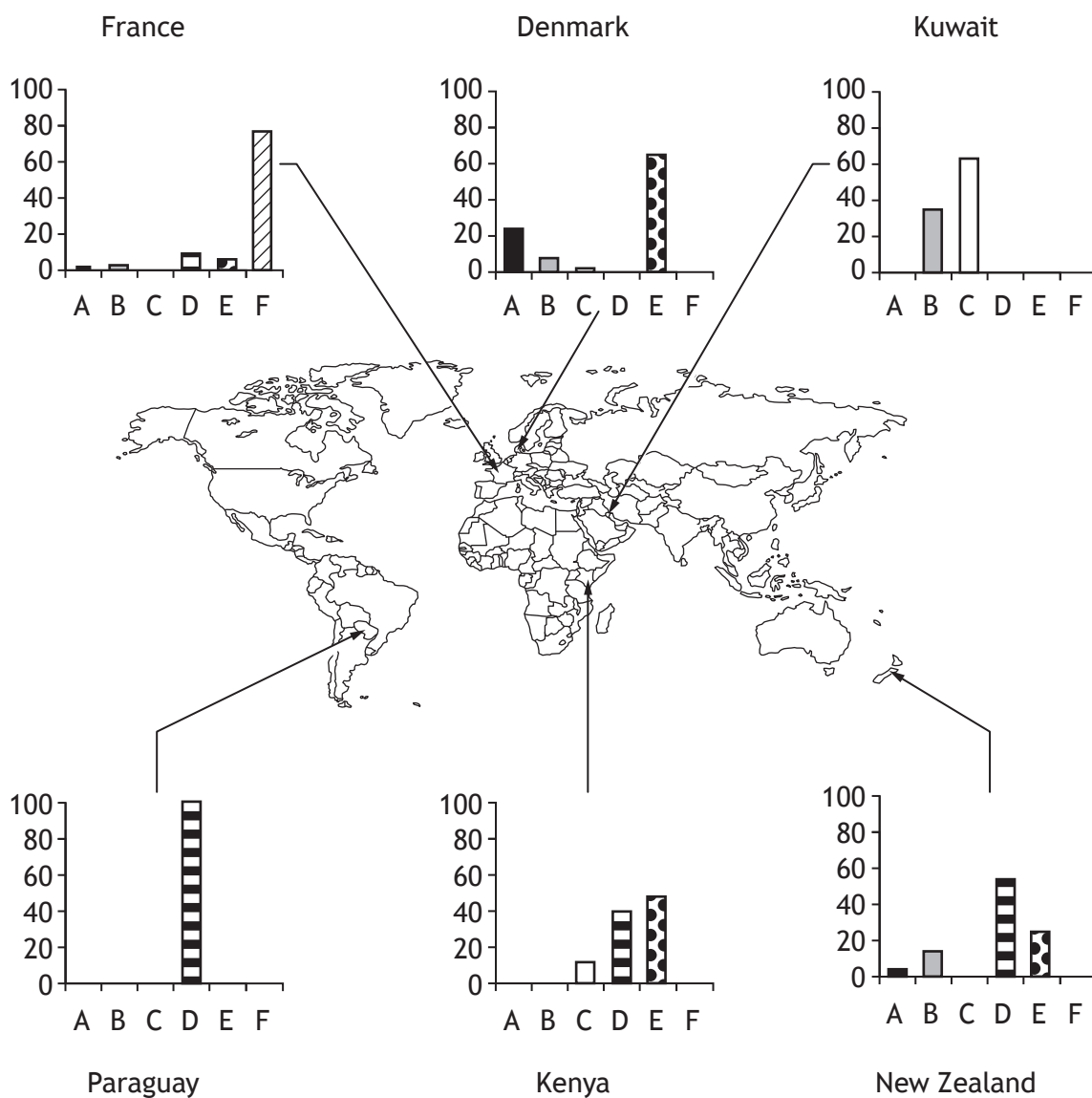
- (a) **Discuss** a range of possible impacts of climate change. You should support your answer with specific examples. **10**
- (b) Many strategies have been implemented to both reduce greenhouse gas emissions **and** to manage the effects of climate change.
- (i) **Describe** strategies you have studied **and**
- (ii) **comment on** their effectiveness. **10**

[Turn over for next question

DO NOT WRITE ON THIS PAGE

Question 4 — Energy

Diagram Q4A Energy production by source (%) in selected countries



Key

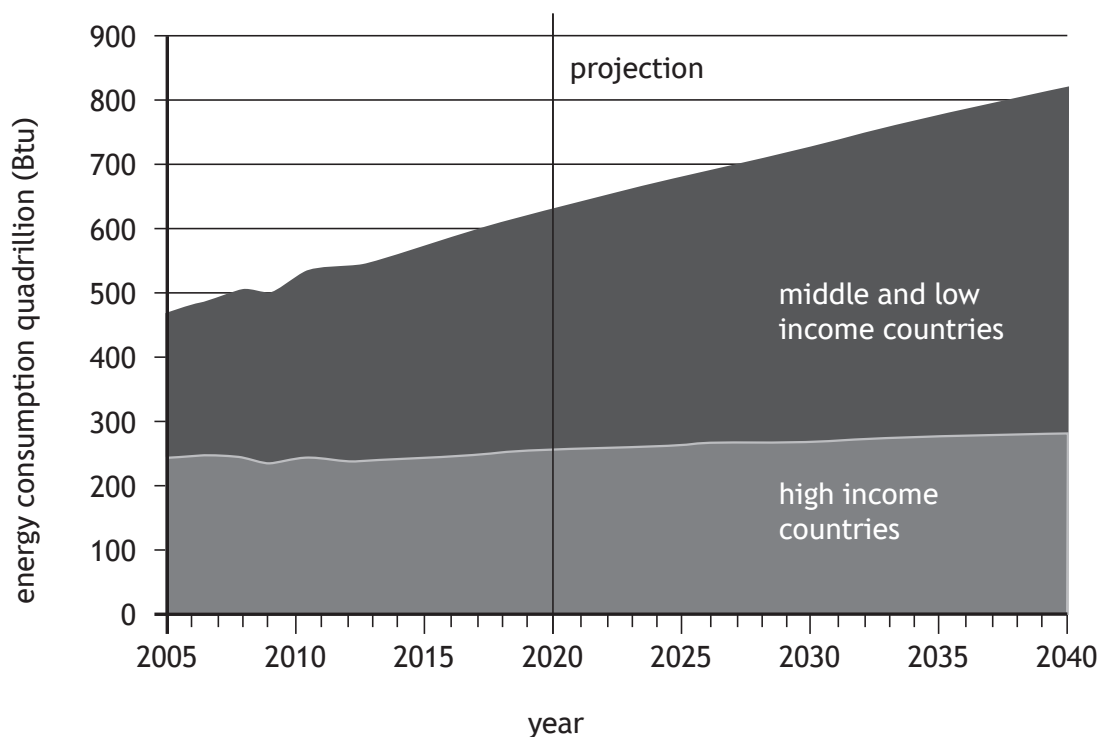
- A coal
- B natural gas
- C oil
- D hydroelectric power
- E other renewables
- F nuclear

(a) Study Diagram Q4A.

Using the information in the diagram, **suggest reasons** for the different patterns of energy production in the countries shown.

Question 4 — Energy (continued)

Diagram Q4B Projected world energy consumption



Key

Btu: British thermal unit

(b) Look at Diagram Q4B.

Suggest reasons for the increasing energy demand in middle and low income countries.

12

[Turn over

SECTION 2 — APPLICATION OF GEOGRAPHICAL SKILLS — 20 marks

Attempt the question

Question 5

Plans for a new business, retail and leisure development called Newlands Park close to Luton, 45 km from London, have been approved. Whilst the development has been agreed by the local authority, it has been met with objections from local residents, business owners and environmentalists.

Plans for Newlands Park include

- 46,500 m² of high-spec offices
- a large hotel with conference and meeting facilities
- an eye-catching environmentally friendly 'green' roof with areas for walking and cafés with views over the development
- retail units
- a leisure complex with a cinema and innovative activities.

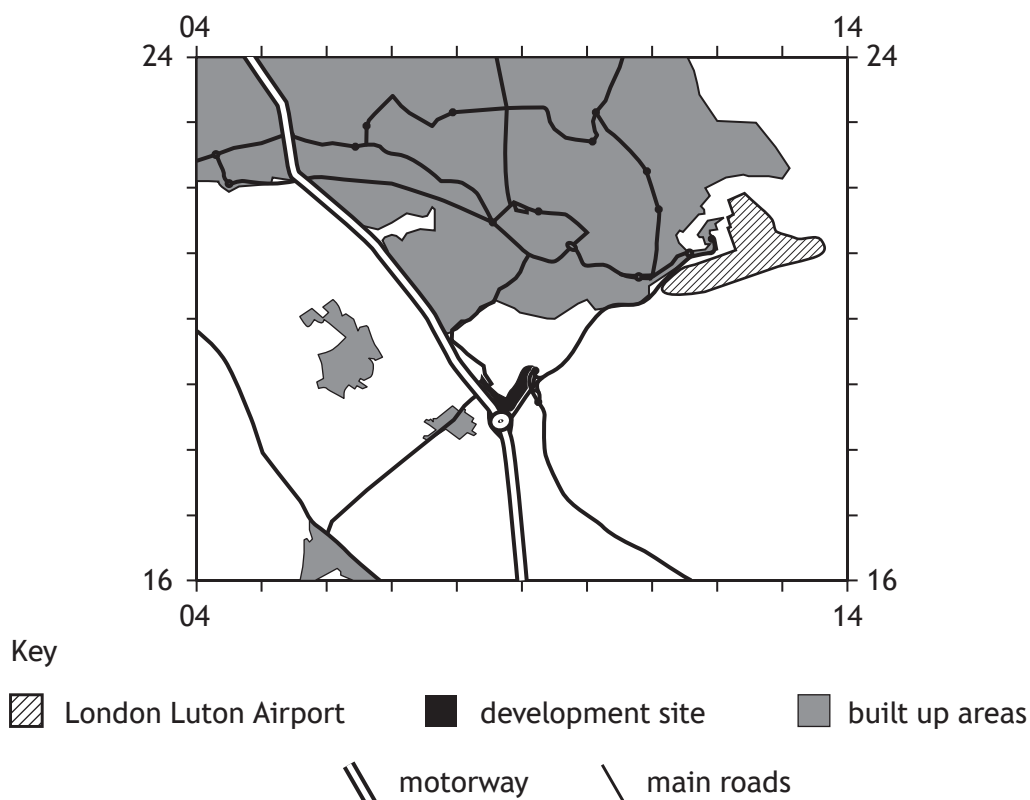
Study the Ordnance Survey map extract of the Luton area, Diagram Q5A, Diagram Q5B, Diagram Q5C and Diagram Q5D before answering this question.

Referring to map evidence from the OS map extract and information from the other sources, **discuss**

- the advantages and disadvantages of the proposed site of the development **and**
- any possible social, economic or environmental impacts this development may have on the surrounding area.

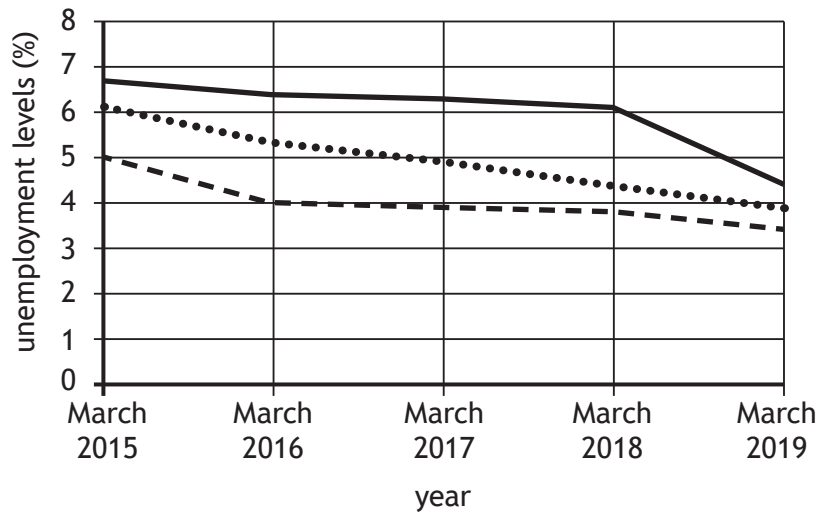
20

Diagram Q5A Location map of development site



Question 5 (continued)

Diagram Q5B Selected unemployment figures



Key

— Luton area - - Eastern England ••• United Kingdom

Diagram Q5C Average daily traffic levels at Junction 10 of the M1 (GR 0818)

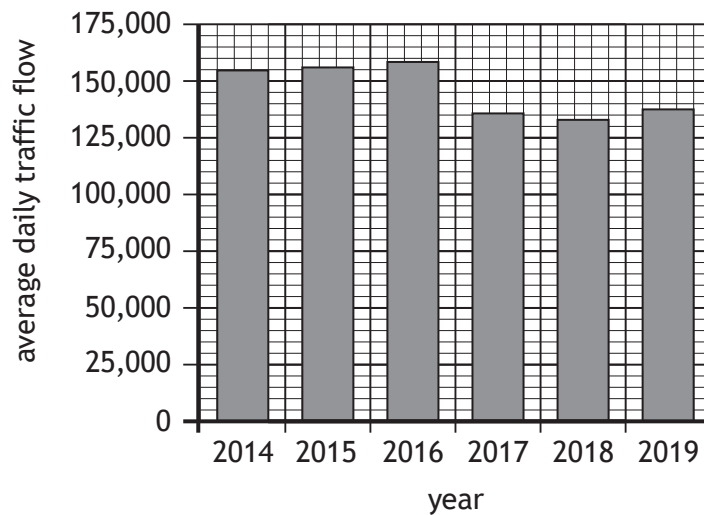


Diagram Q5D Artists impression of Newlands Park development



[END OF QUESTION PAPER]

[BLANK PAGE]

DO NOT WRITE ON THIS PAGE

[BLANK PAGE]

DO NOT WRITE ON THIS PAGE

[BLANK PAGE]

DO NOT WRITE ON THIS PAGE

Acknowledgement of copyright

- Diagram Q2B Infographic is adapted from The Lancet.
SQA has made every effort to trace the owners of copyright of this item and seek permissions. We are happy to discuss permission requirements and incorporate any missing acknowledgement.
- Diagram Q5 Artists impression of Newlands Park development – 2020 Developments/Cushman & Wakefield
SQA has made every effort to trace the owners of copyright of this item and seek permissions. We are happy to discuss permission requirements and incorporate any missing acknowledgement.